



Government of India
Ministry of Earth Sciences
India Meteorological Department



Press Release

Date: 31st May, 2025

Time of Issue: 1330 hours IST

Subject: i) Heavy to very heavy rainfall likely to continue over Northeastern states and Sub-Himalayan West Bengal till 01st June.

ii) Rainfall along with thunderstorm & gusty wind likely over northwest India till next 3-4 days.

iii) Heavy rainfall likely to continue over Kerala, coastal Karnataka during next 4-5 days, South Interior Karnataka till 02nd June and Konkan and Goa till 03rd June 2025.

Southwest Monsoon: (Annexure I):

- ❖ The Northern Limit of Monsoon continues to pass through 17.0°N/55°E, 17.5°N/60°E, 18°N/65°E, 18.5°N/70°E, Mumbai, Ahilyanagar, Adilabad, Bhawanipatna, Puri, Sandhead Island, 23.5°N/89.5°E, Balurghat, 30°N/85°E.

Realised weather during past 24 hours till 0830 hours IST of today, the 31st May, 2025 (Annexure II):

- ❖ **Isolated exceptionally heavy rainfall recorded over Meghalaya (Sohra-47 cm).**
- ❖ **Heavy to very heavy rainfall** at some places **with extremely heavy falls** recorded at isolated places over Assam & Meghalaya, Nagaland, Manipur, Mizoram & Tripura, Sub-Himalayan West Bengal, Coastal Karnataka; **Heavy to very heavy rainfall** at isolated places over Kerala, South Interior Karnataka, Odisha; **Heavy rainfall** at isolated places over Jharkhand, Chhattisgarh, Coastal Andhra Pradesh, Telangana and Rayalaseema.
- ❖ **Thunderstorm accompanied with Squally/Gusty winds** with speed 70-80 kmph at isolated places over Assam & Meghalaya; with speed 40-70 kmph at isolated places over Andaman & Nicobar Islands, Gangetic West Bengal, Jharkhand, Odisha, Jammu-Kashmir-Ladakh-Gilgit-Baltistan-Muzaffarabad, Himachal Pradesh, Uttarakhand, Punjab, Haryana, East Uttar Pradesh, Madhya Maharashtra, Marathwada, Arunachal Pradesh and Nagaland, Manipur, Mizoram & Tripura.

For more details of realised weather, kindly refer [Annexure II](#),

Detailed observations of Maximum Temperature during past 24 hours till 0830 hours IST of today are appended in [Annexure III](#).

i. Weather Systems, Forecast and Warnings (refer to Annexure IV & V):

- ❖ Yesterday's **Depression** over Bangladesh moved north-northeast wards and weakened into a **Well marked low pressure** area over Meghalaya & neighbourhood at 1730 hrs IST of 30th May and further weakened into a **Low pressure** area over northeast Assam & neighbourhood at 0530 hrs IST of today **and it became less marked at 0830 hrs IST of today**, the 31st May, 2025. However, the associated cyclonic circulation lies over Arunachal Pradesh in lower tropospheric levels.
- ❖ The Western disturbance now seen as cyclonic circulation over north Pakistan & adjoining Jammu & Kashmir between lower & middle tropospheric levels.
- ❖ The upper air cyclonic circulation over central Pakistan and a trough runs from this cyclonic circulation to Northwest Uttar Pradesh across Punjab, Haryana in lower tropospheric levels.
- ❖ A trough runs from northeast Uttar Pradesh to east Vidarbha in lower tropospheric levels.
- ❖ Under the influence of these systems, the following weather is likely:

Northeast India:

- ✓ Light/moderate rainfall at most/many places **with isolated heavy falls** likely to continue over Northeast India during next 7 days. Isolated **very heavy rainfall** is very likely over Arunachal Pradesh on 31st May; Assam & Meghalaya and Nagaland, Manipur, Mizoram & Tripura on 31st May & 01st June.

- ✓ Light/moderate rainfall at most places **with isolated heavy to very heavy falls on 31st May and isolated heavy falls on 01st June** likely to continue over Sub-Himalayan West Bengal & Sikkim.

South Peninsular India:

- ✓ Light/moderate rainfall at many places with isolated heavy rainfall accompanied with **thunderstorm, lightning & gusty winds speed reaching 40-50 kmph over Kerala & Mahe, Karnataka during 31st May-04th June.**
- ✓ Light/moderate rainfall at some places with isolated heavy rainfall accompanied with **thunderstorm, lightning & gusty winds speed reaching 40-50 kmph** over Coastal Andhra Pradesh on 31st May; South Interior Karnataka during 31st May-02nd June.

Northwest India:

- ✓ Light/moderate rainfall at many/some places accompanied with **thunderstorm, lightning & gusty winds speed reaching 40-50 kmph** likely over Jammu-Kashmir-Ladakh-Gilgit-Baltistan-Muzaffarabad, Himachal Pradesh, Uttarakhand, Punjab, Haryana Chandigarh & Delhi; light/moderate rainfall at some/isolated places over Uttar Pradesh, Rajasthan during 31st May-04th June.
- ✓ **Thundersquall wind speed reaching 50-60 kmph gusting to 70 kmph** likely over Jammu-Kashmir on 31st May; Himachal Pradesh during 31st May-02nd June and Rajasthan during 02nd-04th June.
- ✓ **Isolated heavy rainfall** also likely over Jammu-Kashmir-Ladakh-Gilgit-Baltistan-Muzaffarabad on 31st, Himachal Pradesh, Uttarakhand on 31st May & 01st June.
- ✓ **Dust storm** also very likely at isolated places over West Rajasthan during 02nd-04th June.

West India:

- ✓ Light/moderate rainfall at many places likely over Konkan & Goa with **isolated heavy rainfall** likely over Konkan & Goa during 01st-03rd June.

East & Central India:

- ✓ **Isolated to scattered** light/moderate rainfall accompanied with **thunderstorm, lightning & gusty winds speed reaching 40-50 kmph** likely over Vidarbha, Chhattisgarh, Gangetic West Bengal, Jharkhand, Odisha, Madhya Pradesh, Bihar, Madhya Pradesh on 31st May & 01st June.
- ✓ **Isolated heavy rainfall** likely over Bihar, Jharkhand and Odisha on 31st May.

Maximum Temperature Forecast:

- ❖ Rise by about 2°C in maximum temperatures over likely over Northwest India during next 24 hours; Fall by about 2-3°C during next 3 days and rise by 2-3°C thereafter.
- ❖ No significant change in maximum temperatures likely over East India during next 24 hours; gradual rise by 3-5°C in maximum temperatures during next 4 days and no large change thereafter.
- ❖ Gradual rise by 2-3°C in maximum temperatures over Madhya Pradesh during next 5 days and no large change thereafter.
- ❖ No significant change in maximum temperatures likely over rest parts of the country.

FISHERMEN WARNINGS (Graphics in Annexure VI)

(A) **Fishermen are advised not to venture** over south Arabian Sea & southern parts of central Arabian Sea from 1130 IST of 31st May to 0530 IST of 01st June, over south and many parts of central Arabian Sea from 0530 IST of 01st June to 0530 IST of 02nd June; over Lakshadweep, Maldives, Comorin areas from 1130 IST of 31st May to 0530 IST of 02nd June; over Gulf of Mannar from 1130 IST of 31st May to 0530 IST of 05th June; and along & off Kerala, Karnataka coasts from 1130 IST of 31st May to 0530 IST of 02nd June; along and off Somalia coasts and adjoining sea areas from 1130 IST of 31st May to 0530 IST of 05th June; along and off Gujarat coast from 1130 IST of 31st May to 0530 IST of 02nd June; off north Gujarat coast and some parts of northeast Arabian Sea on 02nd June; over southern parts of north Arabian Sea on 03rd and 4th June.

(B) Fishermen are advised not to venture off Tamil Nadu, Andhra Pradesh coasts & most parts of Bay of Bengal from 1130 IST of 31st May to 0530 IST of 02nd June; central parts of Bay of Bengal from 0530 IST of 02nd June to 0530 IST of 04th June; over most parts of central and adjoining parts of north Bay of Bengal on 04th June.

iv. Weather conditions and forecast over Delhi/NCR during 31st May to 03rd June, 2025 (Annexure VII)

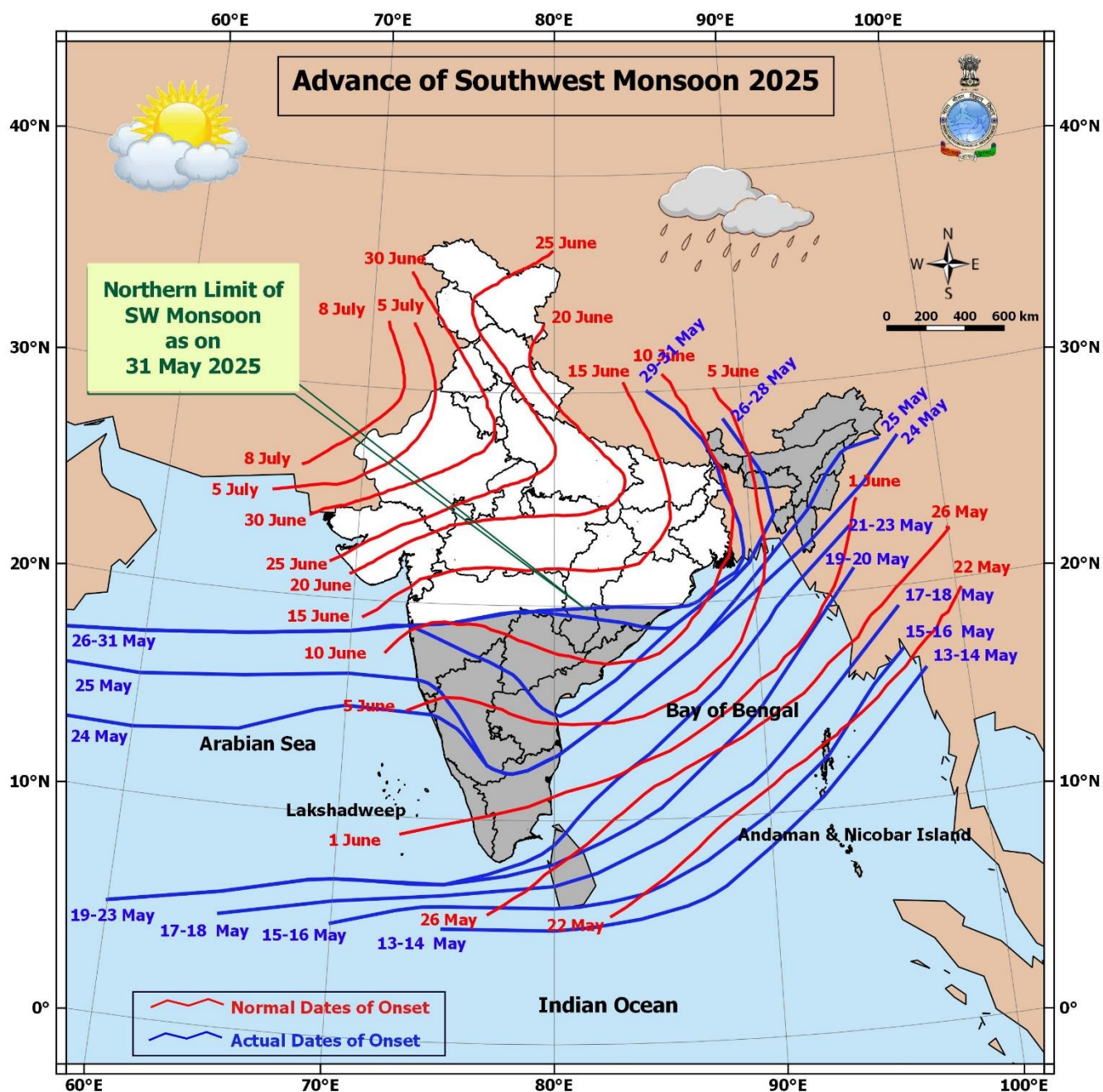
For more details, kindly refer National Weather Bulletin:

https://mausam.imd.gov.in/responsive/all_india_forecast_bulletin.php

For District wise warnings refer: <https://mausam.imd.gov.in/responsive/districtWiseWarningGIS.php>

For Depression Bulletins refer:

https://rsmcnewdelhi.imd.gov.in/uploads/archive/1/1_fba0b7_02.National%20Bulletin%20No%2002-24May2025_0830IST.pdf



Significant weather reported during past 24 hours till 0830 hours IST of today:**Rainfall recorded (in cm) reported during past 24 hours till 0830 hours IST of today:**

- ❖ **Assam & Meghalaya:** Cherrapunji(rkm) (dist East Khasi Hills) 47; Cherrapunji (dist East Khasi Hills) 41; Mawsynram (dist East Khasi Hills) 40; Khliehriat (dist East Jaintia Hills) 30; Mawkyrwat (dist South West Khasi Hills) 29; Mawphlang (dist East Khasi Hills) 21; Chauldhowaghat (dist Lakhimpur) 19; Chouldhuwaghat ARG (dist Lakhimpur) 18; N.lakhimpur/Lilabari (dist Lakhimpur), Tezpur (dist Shonitpur) 17 Each; Majbat (dist Udalguri), Khanapara (dist Kamrup Metropolitan), Mazbat ARG (dist Udalguri) 16 Each; Shella (dist East Khasi Hills), Amraghat (dist Cachar) 15 Each; Jowai (dist West Jaintia Hills), Badatighat (dist Lakhimpur), Chandrapur ARG (dist Kamrup (rural)), Khetri ARG (dist Kamrup (rural)), Sonapur ARG (dist Kamrup Metropolitan) 13 Each; Bihpuria AWS (dist Lakhimpur), Numaligarh (dist Golaghat), Barpathar (dist Golaghat), Guwahati ARG (dist Kamrup Metropolitan), Panbari (dist Chirang) 12 Each; Guwahati AP (dist Kamrup Metropolitan), Dhemaji (dist Dhemaji), Byrnihat ARG (dist Ri Bhoi), Sualkuchi ARG (dist Kamrup (rural)), Laharighat ARG (dist Morigaon), Guwahati City AWS (dist Kamrup Metropolitan) 11 Each; Shillong CSO (dist East Khasi Hills), Goibargaon (dist Baksa), Barapani (dist Ri Bhoi), Jia Bharali N T Xing (dist Shonitpur), Guwahati AWS (dist Kamrup Metropolitan), Neamatighat (dist Jorhat), Nongstein (dist West Khasi Hills), Majuli (dist Majuli), Udaipur (dist Tinsukia), Kalakshetra ARG (dist Kamrup Metropolitan) 10 Each; Shillong AWS (dist East Khasi Hills), Dholai (dist Cachar), Khowang (dist Dibrugarh), Baithalangso (dist West Karbi Anglong), Bhumuraguri (dist Shonitpur), Tangla ARG (dist Udalguri), Hangrabari ARG (dist Kamrup Metropolitan) 9 Each; Dharamtul (dist Morigaon), Jiagaon (dist Tinsukia), Lakhipur (dist Cachar), Tamulpur ARG (dist Baksa), Dhupdhara ARG (dist Goalpara), Hazo ARG (dist Kamrup (rural)), Bajali AWS (dist Bajali), Dhekiajuli (dist Shonitpur), Silchar (dist Cachar) 8 Each;
- ❖ **Sub Himalayan West Bengal & Sikkim:** Sevoke (dist Darjeeling), Buxaduar (dist Alipurduar), Hasimara (dist Alipurduar) 23 Each; Beech Tea Garden (dist Alipurduar) 21; Hilla T.e. (dist Jalpaiguri) 17; Chengmari/Diana (dist Jalpaiguri) 16; Banarhat High School (dist Jalpaiguri), Kurti T.e. (dist Jalpaiguri) 15 Each; Neora (dist Jalpaiguri), Ghatia T.e. (dist Jalpaiguri), Gurjonghora Tea Estate (dist Jalpaiguri), Soongachi T.e. (dist Jalpaiguri), Tra Nagrakata (dist Jalpaiguri), Dima Tea Estate (dist Alipurduar) 14 Each; Ghish (dist Jalpaiguri), Indong T.e. (dist Jalpaiguri), Jiti T.e. (dist Jalpaiguri), Bhutanghat (dist Alipurduar) 13 Each; Good Hope Tea Estate (dist Jalpaiguri), Zurrantee T.e. (dist Jalpaiguri), Nagarkata (dist Jalpaiguri) 12 Each; Gajoldoba (dist Jalpaiguri), Aibheel Tea Estate (dist Jalpaiguri), Diana Tea Estate (dist Jalpaiguri), Gandrapara Tea Garden (dist Jalpaiguri), Leesh River Tea Garden (dist Jalpaiguri) 11 Each; Bhatkawa Tea Estate (dist Jalpaiguri), Chel (dist Jalpaiguri), Oodlabari Tea Estate (dist Jalpaiguri) 10 Each; Singhik (dist Mangan), Baradighi T.e. (dist Jalpaiguri), Kumlai T.e. (dist Jalpaiguri), Washabari Tea Estate (dist Jalpaiguri), Fagu Tea Estate (dist Jalpaiguri), Mangan (dist Mangan), Dalgaon Tea Estate (dist Alipurduar) 9 Each; Shipgyar (dist Mangan), Batabari T.e. (dist Jalpaiguri), Chalouni Tea Estate (dist Jalpaiguri), Damdim Tea Estate (dist Jalpaiguri), Gaikata Tea Estate (dist Jalpaiguri), Saraswatipur Tea Estate (dist Jalpaiguri) 8 Each;
- ❖ **Coastal Karnataka:** Puttur HMS (dist Dakshina Kannada) 23; Uppinangadi (dist Dakshina Kannada) 22; Belthangadi (dist Dakshina Kannada) 20; Sulya (dist Dakshina Kannada) 19; Mani (dist Dakshina Kannada) 16; Mudubidre (dist Dakshina Kannada), Bantwal (dist Dakshina Kannada) 14 Each; Dharmasthala (dist Dakshina Kannada) 12; Panambur (dist Dakshina Kannada) 7;
- ❖ **Nagaland, Manipur, Mizoram & Tripura:** Saiha (dist Saiha) 22; Senapati (dist Senapati) 15; Champai AWS (dist Champhai) 14; Lawngtlai (dist Lawngtlai) 12; Aizawl (dist Aizawl), Zunheboto AWS (dist Zunheboto) 9 Each; Wokha AWS (dist Wokha), Ukhrul (dist Ukhrul) 8 Each; Chottabekra (dist Imphal West), Kiphire AWS (dist Kiphire), Kolasib ARG (dist Kolasib) 7 Each;
- ❖ **Arunachal Pradesh:** Tezu (dist Lohit), Bomdila AWS (dist West Kameng) 18 Each; Basar AWS (dist West Siang), Basar (dist West Siang) 16 Each; Yazali (dist Lower Subansiri) 15; Naharlagun (dist Papumpara), Tezu AWS (dist Lohit) 14 Each; Miao (dist Changlang), Ziro (dist Lower Subansiri), Hawai (dist Anjaw) 13 Each; Pasighat AP (dist East Siang) 12; Daporizo AWS (dist Upper Subansiri), Passighat AWS (dist East Siang) 11 Each; Roing (dist Lower Dibang Valley), Seppa (dist East Kameng) 10 Each; Tuting (dist Upper Siang), Daparijo (dist Upper Subansiri), Kibithu (dist Anjaw) 9 Each; Bomdila (dist West Kameng) 8;
- ❖ **Kerala & Mahe:** Muliya AWS (dist Kasargod) 17; Kudulu (dist Kasargod) 14; Panathur AWS (dist Kasargod) 12; Hosdurg (dist Kasargod), Cherthala (dist Alapuzha) 11 Each; Haripad (dist Alapuzha) 10; Mavelikara (dist Alapuzha), Peermade To (dist Idukki), Mahe (dist Mahe), Kozhikode (dist Kozhikode) 9 Each; Ponnani (dist Malappuram), Kumarakam (dist Kottayam), Enamakal (dist Thrissur), Kollam Rly (dist Kollam), Kayamkulam ARG (dist Alapuzha), Kannur (dist Cannur), Kunnamkulam (dist Thrissur) 8 Each; Taliparamba (dist Cannur), Mancompu (dist Alapuzha), Vadakara (dist Kozhikode), Vaikom (dist Kottayam), Peringome AWS (dist Cannur), Kalamassery AWS (dist Ernakulam), Chavara AWS (dist Kollam), Ernakulam South (dist Ernakulam) 7 Each;
- ❖ **Odisha:** Nandahandi (dist Nawarangpur) 15; Jamda (dist Mayurbhanj) 12; Bhanjanagar (dist Ganjam) 11; Tensa (dist Sundargarh) 10; Lahunipara (dist Sundargarh), Tangarpali (dist Sundargarh), Nawarangpur PTO (dist Nawarangpur), Bargarh (dist Bargarh) 9 Each; Odagaon (dist Nayagarh), Hemgiri (dist Sundargarh) 8 Each;
- ❖ **South Interior Karnataka:** Bhagamandala (dist Kodagu) 13; Napoklu (dist Kodagu) 8;
- ❖ **Chhattisgarh:** Deobhog (dist Gariaband) 10;
- ❖ **Coastal Andhra Pradesh & Yanam:** Vepada (dist Vizianagaram) 9; Koyyalagudem (dist Eluru) 8; Narsipatnam (dist Anakapalli) 7;
- ❖ **Rayalaseema:** Allagadda (dist Nandyal) 7.

Realised Gusty Winds (KMPH) during past 24hours ending at 0300 UTC of today i.e. 31.05.2025:

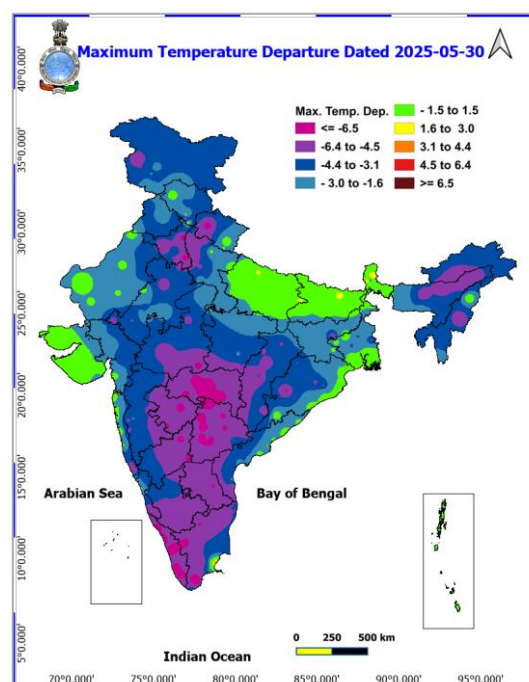
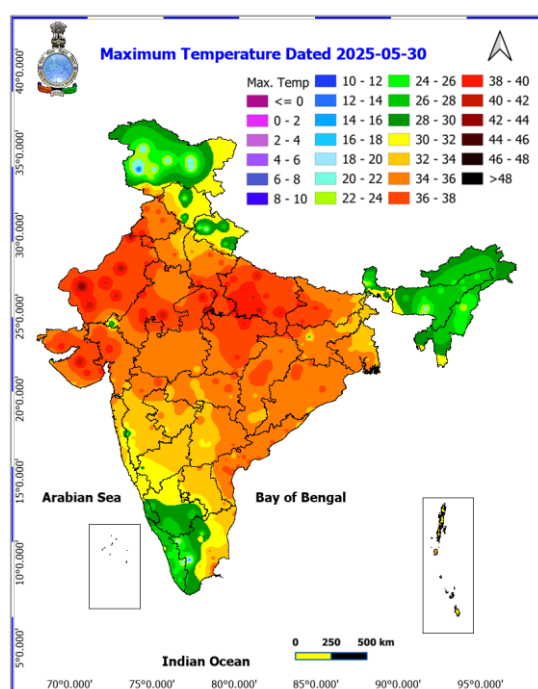
- ❖ **Assam & Meghalaya:** Mawkyrwat 81, Kamrup 65, DARANG 54, Mawsynram 68, Karbianglong 52, Shillong 57;
- ❖ **Nagaland, Manipur, Mizoram & Tripura:** Champhai 67, Kamjong 37;
- ❖ **East Uttar Pradesh:** Kanpur 70, Jalaun 67, Ayodhya 61, Bahraich 54, Lucknow 46, Fursatganj & Fatehpur 41 Each, Chitrakoot 39;
- ❖ **Punjab:** Hoshiarpur 65, Rupnagar (Anandpursahib) 48, Mohali 46, Rupnagar, Moga 43 Each, Pathankot 39;
- ❖ **Jammu-Kashmir:** Samba 63;
- ❖ **Jharkhand:** Simdega 57, Bokaro 48, Saraikela 35, Chatra 35, Netarhat 33, Barhi 33, Palamu-Daltongunj 31;
- ❖ **East Madhya Pradesh:** Jabalpur 55;
- ❖ **Andaman & Nicobar Islands:** Shri Vijayapuram 53;
- ❖ **Himachal Pradesh:** Bilaspur 52, Nehri 52, Tabo 50, Dhaula Kauna 43;
- ❖ **Uttarakhand:** Champawat 52, Maldevta 41, Nainital, Jeolikote 33, Jollygrant 31;
- ❖ **Haryana:** Panipat 52, Yamunanagar 50, Kurukshetra 50, Karnal (Uchani), Kaithal 46 Each,
- ❖ **West Madhya Pradesh:** Ashok nagar 52;
- ❖ **Madhya Maharashtra:** Nashik (Vilholi) 50, Satara (BGRL_Karad) 48, Nashik (Kalwan) 46;
- ❖ **Gangetic West Bengal:** Raidighi 50, Barrackpore 44, Canning 33, Kolkata Airport 31, IMD_MO_Digha 31;
- ❖ **Chhattisgarh:** Dantewada 46;
- ❖ **Marathwada:** Aurangabad (Aurangabad) 44, Hingoli (Hingoli) 39;
- ❖ **Odisha:** Benakuda 44, Jagatsinghpur 37, Ranital 33, Gunupur 33, Mayurbhanj 31, Sonepur 31;
- ❖ **Vidarbha:** Yavatmal 43;
- ❖ **Arunachal Pradesh:** Bomdila, West Kameng Dist 39;
- ❖ **Konkan & Goa:** Sindhudurg (Mulde_AMFU) 35, Raigad (IIG_Alubag) 31, Palghar (Palghar_AWS) 31;
- ❖ **Bihar:** IIT_Patna 29, Arrabari, Arwal 28 each;

Temperature observations during past 24 hours till 0830 hours IST of today:

- ❖ Yesterday, Yesterday, Maximum Temperatures were in the range of 40-46°C in many parts of West Rajasthan; in some parts of Saurashtra & Kutch, East Madhya Pradesh, East Uttar Pradesh; in isolated parts of East Rajasthan; in the range 35-40°C in many parts of Bihar, Chhattisgarh; in some parts of Punjab, Haryana-Chandigarh-Delhi, West Uttar Pradesh, Jharkhand, Gangetic West Bengal, Odisha, Coastal Andhra Pradesh & Yanam, Gujarat Region, Vidarbha; in isolated parts of Madhya Maharashtra, Telangana, Tamil Nadu, Puducherry & Karaikal and they were less than 35°C elsewhere over remaining parts of the country. Yesterday, the highest maximum temperature of 43.6°C was reported at Jaisalmer (West Rajasthan).
- ❖ Yesterday, Maximum Temperatures were appreciably above normal (3.1°C to 5.0°C) at isolated places over Sub Himalayan West Bengal & Sikkim, West Uttar Pradesh, Himachal Pradesh, East Madhya Pradesh and Tamil Nadu, Puducherry & Karaikal; above normal (1.6°C to 3.0°C) at isolated places over Odisha, Bihar, East Uttar Pradesh, Gujarat Region and Saurashtra & Kutch and near normal(-1.5°C to 1.5°C) at many places over Gangetic West Bengal, Konkan & Goa and Coastal Andhra Pradesh & Yanam; at most places over Andaman & Nicobar Islands and West Rajasthan; at few places over Uttarakhand; at isolated places over Jharkhand, East Rajasthan and West Madhya Pradesh.

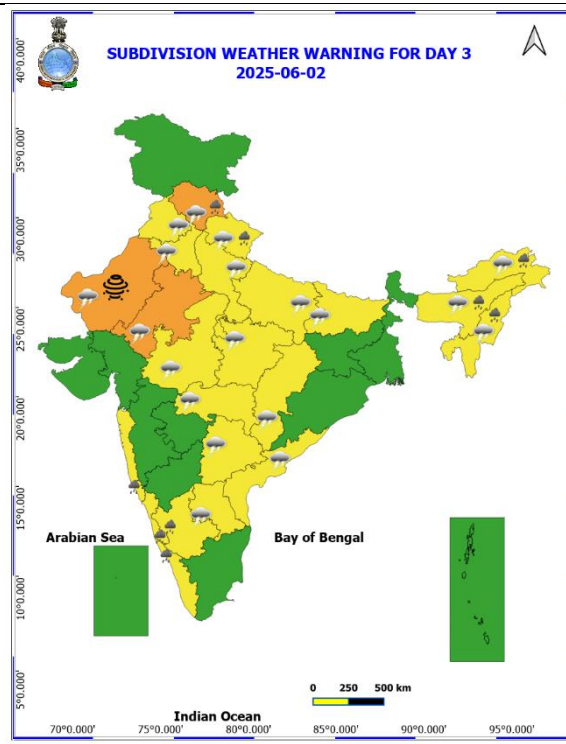
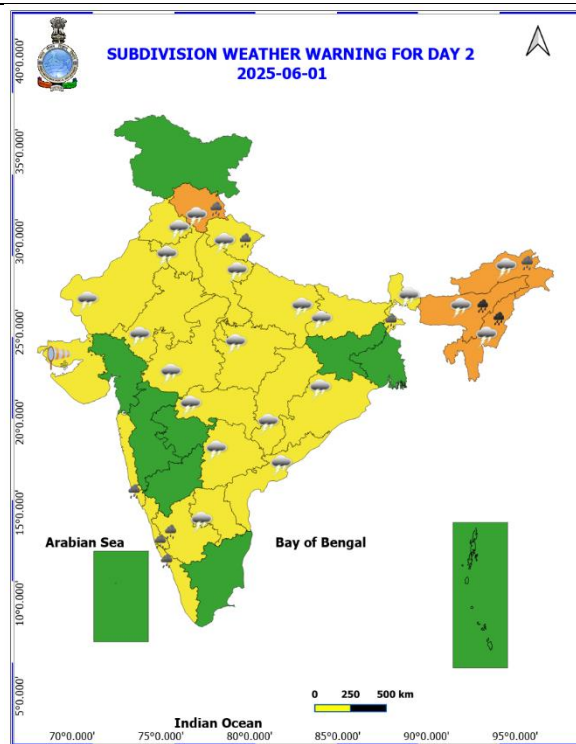
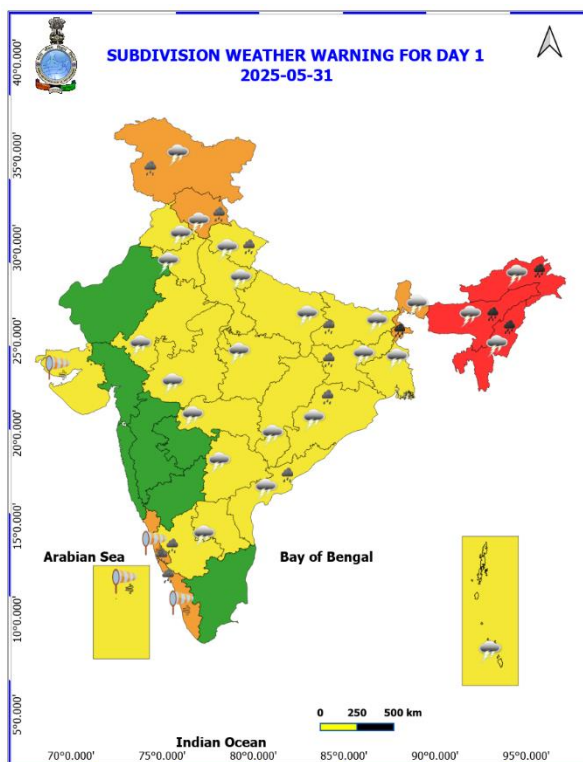
Fig.1: Maximum Temperatures

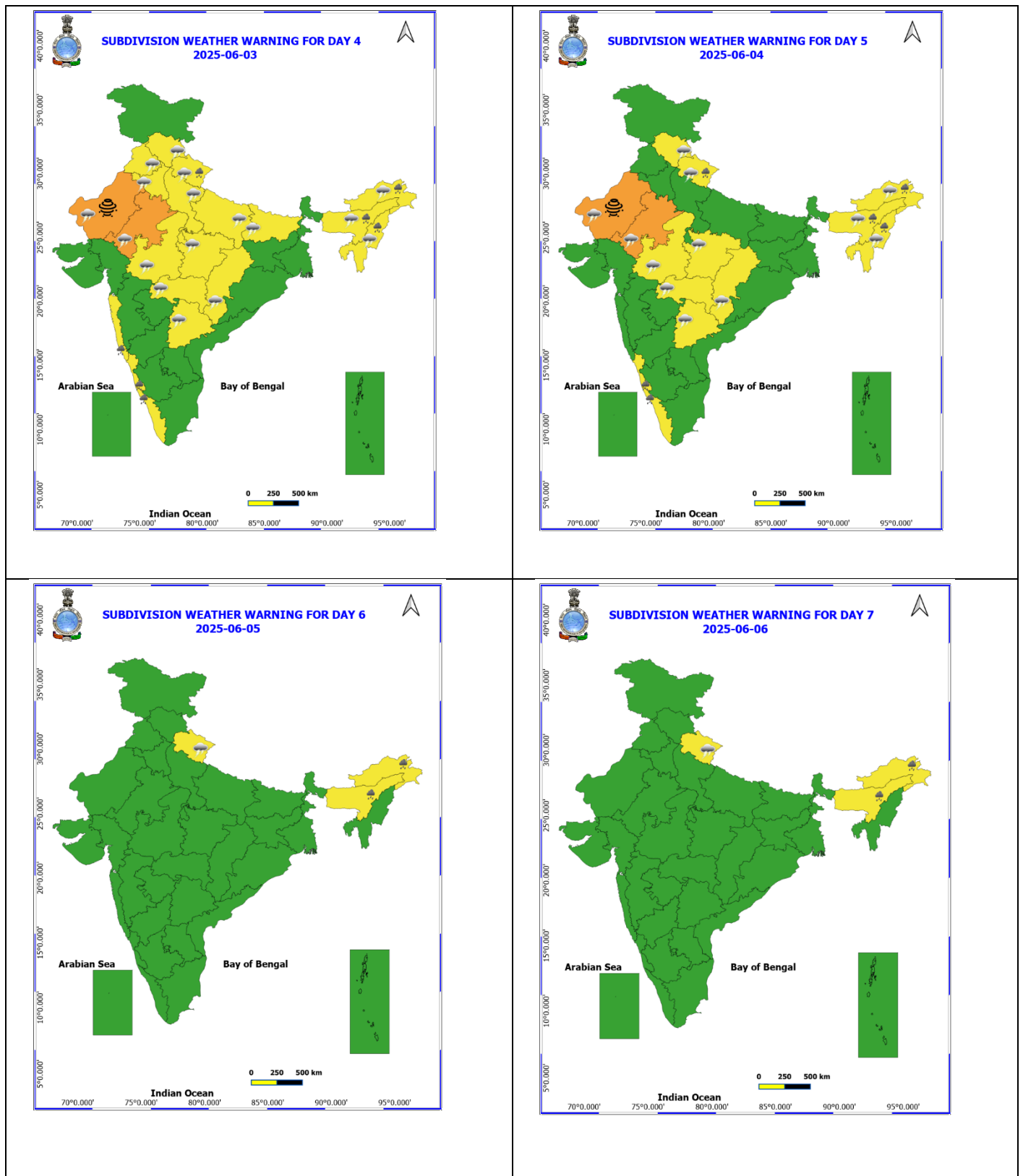
Fig.2: Departure of Maximum Temperatures



7 Days Rainfall Forecast								
S. No.	Subdivision	31-May	01-Jun	02-Jun	03-Jun	04-Jun	05-Jun	06-Jun
		Day 1	Day 2	Day 3	Day 4	Day 5	Day 6	Day 7
1	ANDAMAN & NICOBAR ISLANDS	FWS	FWS	FWS	FWS	FWS	WS	WS
2	ARUNACHAL PRADESH	WS	WS	WS	FWS	FWS	FWS	FWS
3	ASSAM & MEGHALAYA	WS	WS	WS	WS	FWS	FWS	FWS
4	NAGALAND, MANIPUR, MIZORAM & TRIPURA	WS	WS	WS	FWS	FWS	FWS	FWS
5	SUB-HIMALAYAN WEST BENGAL & SIKKIM	WS	WS	FWS	FWS	FWS	FWS	FWS
6	GANGETIC WEST BENGAL	SCT	ISOL	ISOL	ISOL	SCT	ISOL	ISOL
7	ODISHA	SCT	ISOL	ISOL	ISOL	ISOL	ISOL	ISOL
8	JHARKHAND	FWS	ISOL	ISOL	ISOL	ISOL	ISOL	ISOL
9	BIHAR	ISOL	ISOL	ISOL	ISOL	ISOL	ISOL	ISOL
10	EAST UTTAR PRADESH	SCT	ISOL	ISOL	ISOL	ISOL	ISOL	DRY
11	WEST UTTAR PRADESH	ISOL	SCT	SCT	SCT	ISOL	ISOL	DRY
12	UTTARAKHAND	FWS	FWS	FWS	FWS	FWS	SCT	SCT
13	HARYANA CHANDIGARH & DELHI	SCT	SCT	SCT	FWS	DRY	DRY	DRY
14	PUNJAB	SCT	SCT	SCT	SCT	DRY	DRY	DRY
15	HIMACHAL PRADESH	FWS	FWS	FWS	FWS	SCT	ISOL	ISOL
16	JAMMU & KASHMIR AND LADAKH	WS	SCT	SCT	SCT	SCT	ISOL	ISOL
17	WEST RAJASTHAN	ISOL	ISOL	ISOL	ISOL	ISOL	ISOL	ISOL
18	EAST RAJASTHAN	ISOL	ISOL	ISOL	ISOL	ISOL	ISOL	ISOL
19	WEST MADHYA PRADESH	ISOL	ISOL	ISOL	ISOL	ISOL	ISOL	ISOL
20	EAST MADHYA PRADESH	ISOL	ISOL	ISOL	ISOL	ISOL	ISOL	ISOL
21	GUJARAT REGION	ISOL	ISOL	ISOL	ISOL	ISOL	ISOL	ISOL
22	SAURASHTRA & KUTCH	ISOL	ISOL	ISOL	ISOL	ISOL	ISOL	ISOL
23	KONKAN & GOA	ISOL	SCT	SCT	SCT	ISOL	ISOL	ISOL
24	MADHYA MAHARASHTRA	ISOL	ISOL	ISOL	ISOL	ISOL	ISOL	ISOL
25	MARATHAWADA	ISOL	ISOL	ISOL	ISOL	ISOL	ISOL	ISOL
26	VIDARBHA	ISOL	ISOL	ISOL	ISOL	ISOL	ISOL	ISOL
27	CHHATTISGARH	SCT	ISOL	ISOL	ISOL	ISOL	ISOL	ISOL
28	COASTAL ANDHRA PRADESH & YANAM	SCT	ISOL	ISOL	ISOL	ISOL	ISOL	ISOL
29	TELANGANA	ISOL	ISOL	ISOL	ISOL	ISOL	ISOL	ISOL
30	RAYALASEEMA	SCT	ISOL	ISOL	ISOL	ISOL	ISOL	ISOL
31	TAMILNADU PUDUCHERRY & KARAIKAL	ISOL	ISOL	ISOL	ISOL	ISOL	ISOL	ISOL
32	COASTAL KARNATAKA	WS	WS	FWS	FWS	SCT	ISOL	ISOL
33	NORTH INTERIOR KARNATAKA	ISOL	ISOL	ISOL	ISOL	ISOL	ISOL	ISOL
34	SOUTH INTERIOR KARNATAKA	ISOL	ISOL	ISOL	ISOL	ISOL	ISOL	ISOL
35	KERALA & MAHE	WS	FWS	FWS	FWS	FWS	SCT	SCT
36	LAKSHADWEEP	WS	FWS	FWS	FWS	FWS	SCT	SCT

- As the lead period increases forecast accuracy decreases.



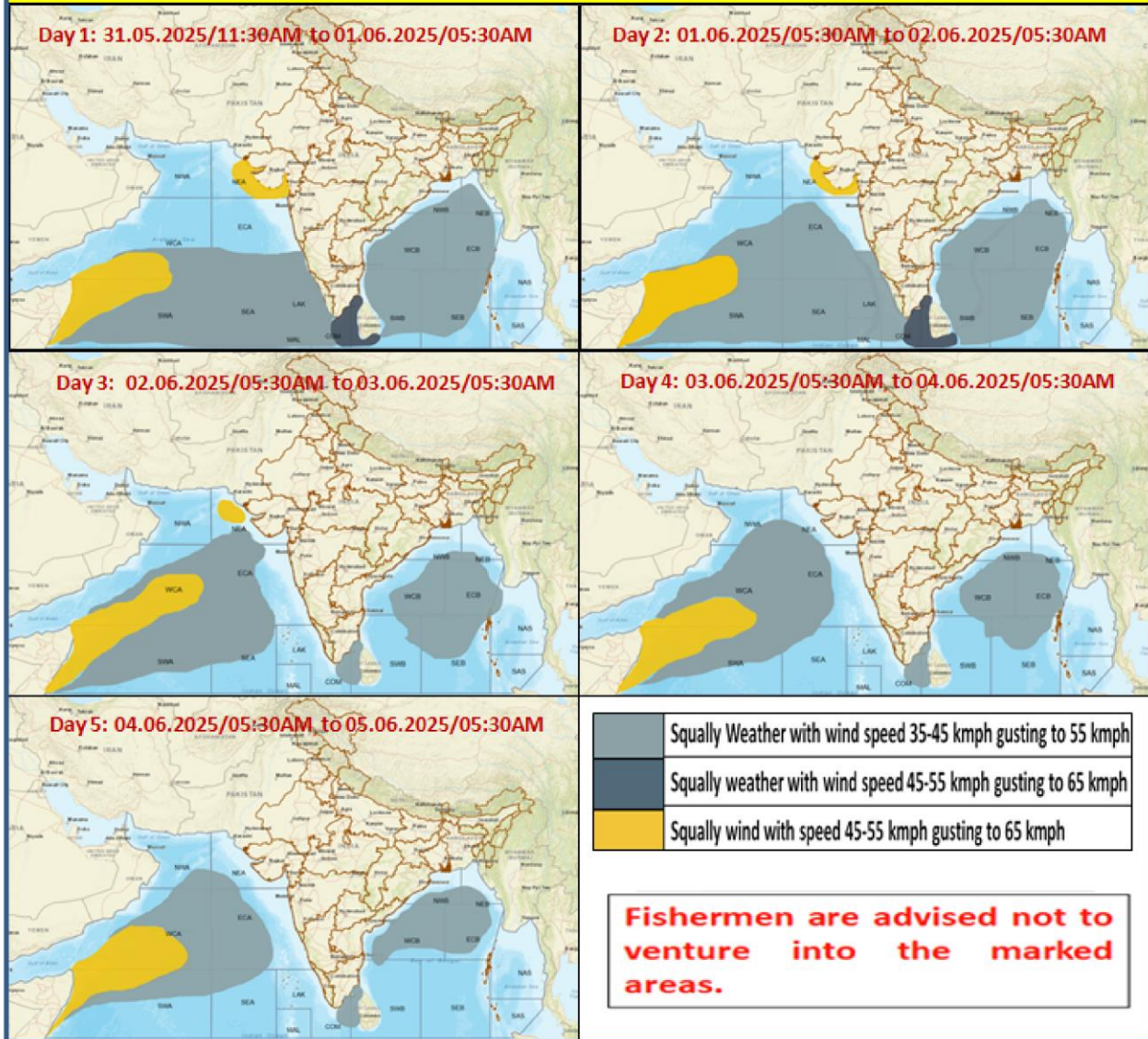


- Action may be taken based on ORANGE AND REDCOLOUR warnings.
- Vulnerable regions likely urban and hilly areas action may be initiated for heavy rainfall warning.
- As the lead period increases forecast accuracy decreases.

Detailed districtwise Multi Hazard weather warning for next five days available at
<https://mausam.imd.gov.in/responsive/districtWiseWarningGIS.php>



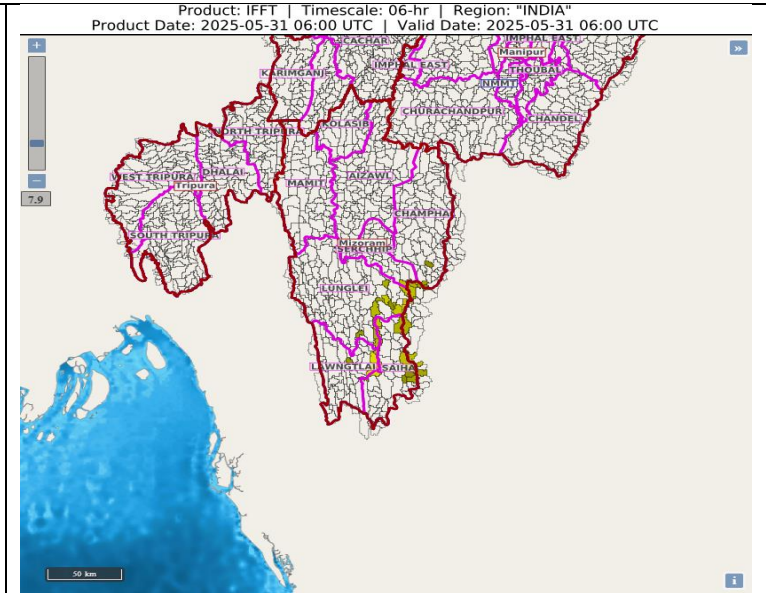
Fishermen Warning Graphics



Flash Flood Guidance

Observed Flash Flood Threat (IFFT) till 1130 IST of 31-05-2025 :

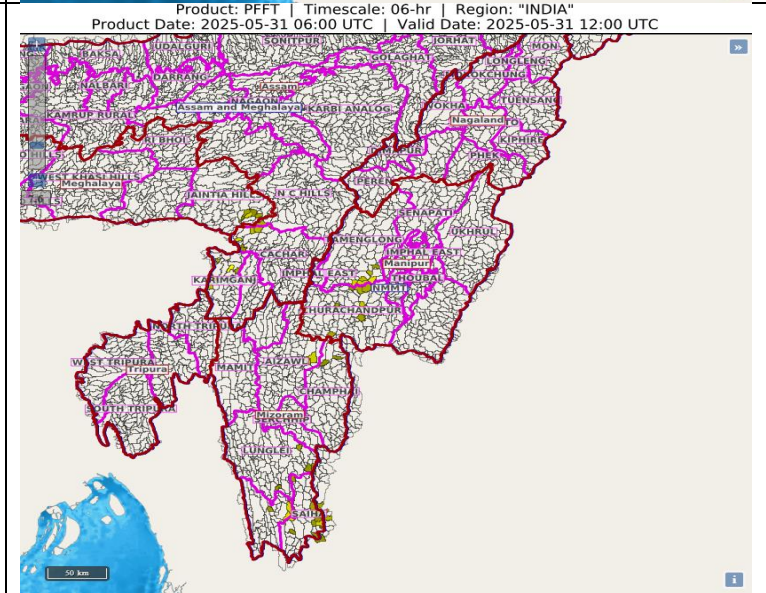
Low flash flood threat **observed over few watersheds & neighbourhoods of following Met Sub-divisions during last 6 hours.** Nagaland Mizoram Manipur Tripura (NMMT) – Mizoram- **Champhai, Lawngtlai, Lunglei, Saiha and Serchhip districts.**



Persistent Flash Flood Threat (PFFT) till 1730 IST of 31-05-2025 :

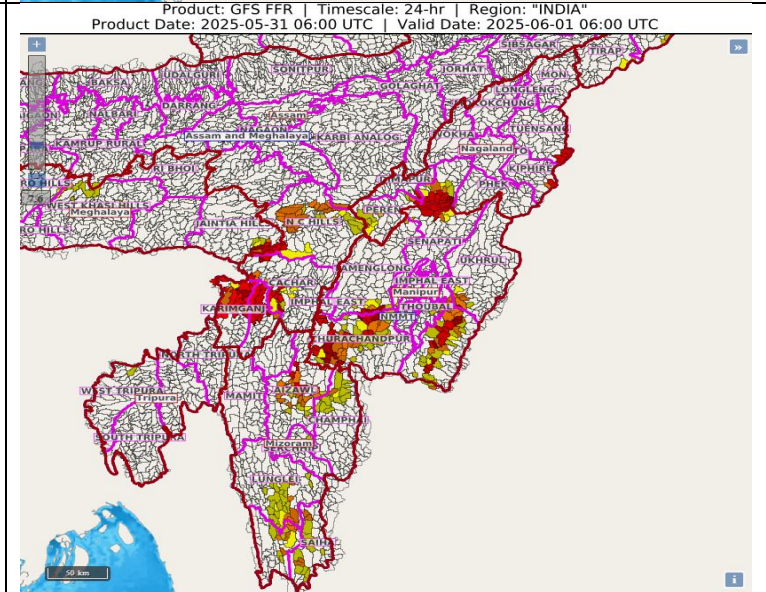
Low flash flood threat **likely over few watersheds & neighbourhoods of following Met Sub-divisions during next 6 hours.** Nagaland Mizoram Manipur Tripura (NMMT) – Manipur- **Churachandpur, Tamenglong districts.** Mizoram- **Aizawl, Champhai, Lawngtlai, Lunglei and Saiha districts.**

Surface runoff/ Inundation may occur at some fully saturated soils & low-lying areas over Area of Concern (AoC) as shown in map due to expected rainfall occurrence in next 6 hours.



24 hours Outlook for the Flash Flood Risk (FFR) till 1130 IST of 01-06-2025 :

Low flash flood risk **likely over few watersheds & neighbourhoods of following Met Sub-divisions during next 24 hours.** Nagaland Mizoram Manipur Tripura (NMMT) – Manipur- **Chandel, Churachandpur, Senapati, Tamenglong, Ukhrul districts.** Mizoram- **Aizawl, Champhai, Lawngtlai, Lunglei, Saiha, Serchhip districts.** Nagaland- **Dimapur, Kiphire, Kohima, Peren and Tuensang districts.**



Surface runoff/ Inundation may occur at some fully saturated soils & low-lying areas over Area of Concern (AoC) as shown in map due to expected rainfall occurrence in next 24 hours.

Weather forecast over Delhi/NCR during 31th May to 03rd June 2025**Past Weather:**

There has been a fall in the minimum temperature upto 2°C and fall in the maximum temperature upto 5°C over Delhi/NCR during the past 24 hours. The maximum and minimum temperatures over Delhi were around 34 to 35°C and 23 to 26°C, respectively. The minimum temperature was below normal up to 1 to 3°C and the maximum temperature was below normal up to 5 to 8 °C. Partly cloudy sky conditions with predominant surface wind from the variable direction with wind speeds up to 08 kmph prevailed during the past 24 hours. Mainly clear sky conditions with wind speed less than 10 kmph from the southwest direction prevailed over the region in the forenoon today.

Weather Forecast:

31.05.2025: Partly cloudy sky. Very light to light rain accompanied by thunderstorm and gusty winds (speed 40 – 50 kmph) temporarily reaching 60 kmph during thunderstorm with dust rising winds towards afternoon/evening. The maximum temperatures over Delhi are likely to be in the range of 38 to 40°C. The predominant surface wind will likely be from the southwest direction with a wind speed of less than 10 kmph in the afternoon. The wind speed will gradually increase becoming 10-15 kmph from the south direction during evening and night.

01.06.2025: Partly cloudy sky. Very light to light rain accompanied by thunderstorm and gusty winds (speed 40 – 50 kmph) temporarily reaching 60 kmph during thunderstorm with dust rising winds. The maximum and minimum temperatures over Delhi are likely to be in the range of 37 to 39°C and 26 to 28°C respectively. The minimum temperature will be above normal up to 1 - 2°C and the maximum temperature will be below normal up to 1 to 3°C. The predominant surface wind will likely be from the southwest direction with a wind speed of less than 15 kmph during the morning hours. The wind speed will gradually increase becoming 15-120 kmph from the southwest direction in the afternoon. It will decrease becoming less than 18 kmph from the south direction during evening and night.

02.06.2025: Generally cloudy sky. Very light to light rain accompanied by thunderstorm and gusty winds (speed 40 – 50 kmph) temporarily reaching 60 kmph during thunderstorm with dust rising winds. The maximum and minimum temperatures over Delhi are likely to be in the range of 36 to 38°C and 27 to 29°C respectively. The minimum temperature will be above normal up to 1 - 3°C and the maximum temperature will be below normal up to 2 - 4°C. The predominant surface wind will likely be from the southwest direction with a wind speed of less than 15 kmph during the morning hours. The wind speed will gradually increase becoming less than 18 kmph from the southwest direction in the afternoon. It will increase to less than 25 kmph from the northwest direction during the evening and night.

03.06.2025: Generally cloudy sky. Very light to light rain accompanied by thunderstorm and gusty winds (speed 40 – 50 kmph) temporarily reaching 60 kmph during thunderstorm with dust rising winds. The maximum and minimum temperatures over Delhi are likely to be in the range of 35 to 37°C and 26 to 28°C respectively. The minimum temperature will be above normal up to 1 - 2°C, and the maximum temperature will be below normal up to 3 - 5°C. The predominant surface wind will likely be from the southeast direction with a wind speed of less than 15 kmph during the morning hours. The wind speed will gradually decrease becoming less than 10 kmph from the northwest direction in the afternoon. It will increase to less than 15 kmph from the west direction during the evening and night.

Impact expected and Action Suggested due to thunderstorm with lightning/gusty winds:

- Be cautious and take precautionary measures, though there is the likelihood of thunderstorm/lightning and gusty winds (speed 30 – 50 kmph) temporarily reaching 60 kmph during thunderstorm with dust rising surface winds.
- Breaking of tree branches, uprooting of large avenue trees, Large dead limbs blown from trees, Damage to standing crops, Minor to major damage to power and communication lines due to breaking of branches, Partial damage to vulnerable structures due to strong winds, Loose objects may fly.
- People are advised to keep a watch on the weather for worsening conditions and be ready to move to safer places accordingly, stay indoors, close windows & doors and avoid travel if possible, take safe shelters; do not take shelter under trees, do not lie on concrete floors and do not lean against concrete walls, unplug electrical/ electronic appliances, immediately get out of water bodies, keep away from all the objects that conduct electricity.

Impact & Action Suggested due to heavy to very heavy rainfall over west coast and other areas (For Red & Orange colour warning areas)

- ✓ Isolated **very heavy rainfall** over Arunachal Pradesh, Sub-Himalayan West Bengal & Sikkim on 31st May, Assam & Meghalaya and Nagaland, Manipur, Mizoram & Tripura on 31st May & 01st June.

Impact Expected

- ❖ Localized Flooding of roads, water logging in low lying areas of the above region.
- ❖ Occasional reduction in visibility due to heavy rainfall.
- ❖ Minor damage to kutchha roads.
- ❖ Possibilities of damage to vulnerable structure.
- ❖ Localized Landslides/Mudslides
- ❖ Damage to horticulture and standing crops in some areas due to inundation.
- ❖ It may lead to riverine flooding in some river catchments (for riverine flooding please visit Web page of CWC).

Action Suggested

- ❖ Check for traffic congestion on your route before leaving for your destination.
- ❖ Follow any traffic advisories that are issued in this regard.
- ❖ Avoid going to areas that face the water logging problems often.
- ❖ Avoid staying in vulnerable structure.

Impact expected and action suggested due to isolated thunderstorm with lightning/gusty & Squally winds over

- ✓ **Thundersquall wind speed reaching 50-60 kmph gusting to 70 kmph** over likely over Jammu-Kashmir on 31st May; Himachal Pradesh during 31st May-02nd June; Rajasthan during 02nd-04th June.

Impact expected:

- Minor to Major damage to banana and papaya trees.
- Strong wind/hail may damage plantation, horticulture and standing crops.
- Partial damage to vulnerable structures due to strong winds.
- Minor damage to kutchha houses/walls and huts.
- Loose objects may fly.

Action suggested:

- People are advised to keep a watch on the weather for worsening conditions and be ready to move to safer places accordingly.
- Stay indoors, close windows & doors and avoid travel if possible.
- Take safe shelters; do not take shelter under trees.
- Do not lie on concrete floors and do not lean against concrete walls.
- Unplug electrical/ electronic appliances.
- Immediately get out of water bodies.
- Keep away from all the objects that conduct electricity.

Agromet advisories for likely impact of Heavy Rainfall / Hailstorms / Gusty Winds / Heat Wave

- In North Eastern States, Sub-Himalayan West Bengal & Sikkim, Odisha, Jharkhand, Jammu & Kashmir, Himachal Pradesh, Uttarakhand, Konkan & Goa, Kerala, Coastal Karnataka, South Interior Karnataka and Coastal Andhra Pradesh, drain out excess water and ensure proper drainage in fields with standing crops and vegetables.
- Shift the harvested produce in safer places or cover the produce with tarpaulin sheets in the fields. Tie the harvested crops properly and cover them to minimise the risk of displacement due to strong surface winds.
- Provide mechanical support to horticultural crops and staking to vegetables to avoid lodging.

Livestock / Poultry / Fishery

- Keep the animals inside the shed during heavy rainfall and provide them balanced feed.
- Store feed and fodder in a safe place to prevent spoilage.
- Construct an outlet with proper netting around the ponds to drain out excess water, thereby preventing fish from escaping in case of overflow.

Legends & abbreviations:

- ❖ **Heavy Rain:**64.5-115.5mm; **Very Heavy Rain:**115.6-204.4mm; **Extremely Heavy Rain:** >204.4mm.
- ❖ **Obsy:** Observatory; **AWS:** Automatic Weather Station; **ARG:** Automatic Rain Gauge; **dist:** District; **NH:** National Highway; **KVK:** Krishi Vigyan Kendra; **DVC:** Damodar Valley Corporation; **PTO:** Part Time Office, **Aero:** Aerodrome, **IAF:** Indian Air Force.
- ❖ **Region wise classification of meteorological Sub-Divisions:**
 - **Northwest India:** Western Himalayan Region (Jammu-Kashmir-Ladakh-Gilgit-Baltistan-Muzaffarabad, Himachal Pradesh and Uttarakhand); Punjab, Haryana-Chandigarh-Delhi; West Uttar Pradesh, East Uttar Pradesh, West Rajasthan and East Rajasthan.
 - **Central India:** West Madhya Pradesh, East Madhya Pradesh, Vidarbha and Chhattisgarh.
 - **East India:** Bihar, Jharkhand, Sub-Himalayan West Bengal & Sikkim; Gangetic West Bengal, Odisha and Andaman & Nicobar Islands.
 - **Northeast India:** Arunachal Pradesh, Assam & Meghalaya and Nagaland, Manipur, Mizoram & Tripura.
 - **West India:** Gujarat Region, Saurashtra & Kutch, Konkan & Goa, Madhya Maharashtra and Marathawada.
 - **South India:** Coastal Andhra Pradesh & Yanam, Telangana, Rayalaseema, Coastal Karnataka, North Interior Karnataka, South Interior Karnataka, Kerala & Mahe, Tamil Nadu, Puducherry & Karaikal and Lakshadweep.

LEGENDS

1. अंडमान और निकोबार द्वीपसमूह

2. अरुणाचल प्रदेश

3. असम और मेघालय

4. नागालैंड, मणिपुर, मिजोरम और त्रिपुरा

5. उप-हिमालयी पश्चिम बंगाल और सिक्किम

6. गंगीय पश्चिम बंगाल

7. ओडिशा

8. झारखंड

9. बिहार

10. पूर्वी उत्तर प्रदेश

11. पश्चिम उत्तर प्रदेश

12. उत्तराखंड

13. हरियाणा, चंडीगढ़ और दिल्ली

14. पंजाब

15. हिमाचल प्रदेश

16. जम्मू और कश्मीर और लद्दाख

17. पश्चिम राजस्थान

18. पूर्वी राजस्थान

19. पश्चिम मध्य प्रदेश

20. पूर्वी मध्य प्रदेश

21. गुजरात

22. सौराष्ट्र

23. कोंकण और गोवा

24. मध्य महाराष्ट्र

25. मराठवाड़ा

26. विदर्भ

27. छत्तीसगढ़

28. तटीय आंध्र प्रदेश और यनम

29. तेलंगाना

30. रायलसेमा

31. तमिलनाडु, पुडुचेरी और कराईकल

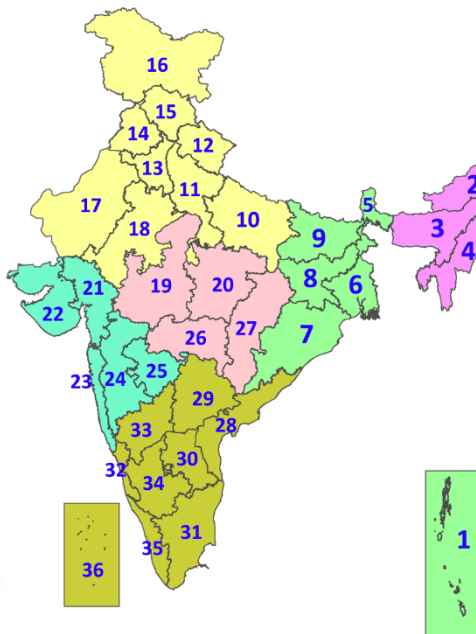
32. तटीय कर्नाटक

33. आंतरिक उत्तरी कर्नाटक

34. आंतरिक दक्षिणी कर्नाटक

35. केरल और माहे

36. लक्षद्वीप



1. Andaman & Nicobar Islands

2. Arunachal Pradesh

3. Assam & Meghalaya

4. Nagaland, Manipur, Mizoram & Tripura

5. Sub-Himalayan West Bengal & Sikkim

6. Gangetic West Bengal

7. Odisha

8. Jharkhand

9. Bihar

10. East Uttar Pradesh

11. West Uttar Pradesh

12. Uttarakhand

13. Haryana, Chandigarh & Delhi

14. Punjab

15. Himachal Pradesh

16. Jammu & Kashmir and Ladakh

17. West Rajasthan

18. East Rajasthan

19. West Madhya Pradesh

20. East Madhya Pradesh

21. Gujarat

22. Saurashtra

23. Konkan & Goa

24. Madhya Maharashtra

25. Marathwada

26. Vidarbha

27. Chhattisgarh

28. Coastal Andhra Pradesh & Yanam

29. Telangana

30. Rayalaseema

31. Tamilnadu, Puducherry & Karaikal

32. Coastal Karnataka

33. North Interior Karnataka

34. South Interior Karnataka

35. Kerala & Mahe

36. Lakshadweep

SPATIAL DISTRIBUTION (% of Stations reporting)

% Stations	Category	% Stations	Category
76-100	Widespread (WS/Most Places)	26-50	Scattered (SCT/A Few Places)
51-75	Fairly Widespread (FWS/Many Places)	1-25	Isolated (ISOL)



Fog



Heavy Rain



Very Heavy Rain



Extremely Heavy Rain



Thunder & Lightning



Hailstorm



Dust Raising Winds



Heavy Snow



Dust Storm



Heat Wave



Warm Night



Hot Day



Hot & Humid



Strong Surface Winds



Cold Wave



Cold Day



Ground Frost

COLOUR CODED WARNING

No Warning (No Action)
Watch (Be Aware)
Alert (Be Prepared To Take Action)
Warning (Take Action)

Probabilistic Forecast

Terms	Probability of Occurrence (%)
Unlikely	< 25
Likely	25 - 50
Very Likely	50 - 75
Most Likely	> 75

* Red colour warning does not mean "Red Alert", Red colour warning means "Take Action".

Forecast and Warning for any day is valid from 0830 hours IST of day till 0830 hours IST of next day.

For more details, kindly visit <https://mausam.imd.gov.in> or contact: 011-2434-4599

(Service to the Nation since 1875)

DEFINITION/CRITERIA

Rain/ Snow *

Heavy: 64.5 to 115.5 mm/cm *
Very Heavy: 115.6 to 204.4 mm/cm*
Extremely Heavy: > 204.4 mm/cm *

Heat Wave

When maximum temperature of a station reaches $\geq 40^\circ \text{C}$ for plains and $\geq 30^\circ \text{C}$ for hilly regions
(a) Based on Departure from normal

Heat Wave: Maximum Temperature Departure from normal 4.5°C to 6.4°C .

Severe Heat Wave: Maximum Temperature Departure from normal $\geq 6.5^\circ \text{C}$

(b). Based on Actual maximum temperature

Heat Wave: When actual maximum temperature $\geq 45^\circ \text{C}$.

Severe Heat Wave: When actual maximum temperature $\geq 47^\circ \text{C}$

(c). Criteria for heat wave for coastal stations

When maximum temperature departure is $> 4.5^\circ \text{C}$ from normal. Heat Wave may be described provided maximum temperature $\geq 37^\circ \text{C}$

Warm Night

When maximum temperature remains 40°C

Warm Night: When minimum temperature departure 4.5°C to 6.4°C .

Severe Warm Night: When minimum temperature departure $> 6.4^\circ \text{C}$.

Cold Wave

When minimum temperature of a station $\leq 10^\circ \text{C}$ for plains and $\leq 0^\circ \text{C}$ for hilly regions.

(a). Based on departure

Cold Wave: Minimum Temperature Departure from normal -4.5°C to -6.4°C .

Severe Cold Wave: Minimum Temperature Departure from normal $\leq -6.5^\circ \text{C}$

(b) Based on actual Minimum Temperature (for Plains only)

Cold Wave : When Minimum Temperature is $\leq 4.0^\circ \text{C}$

Severe Cold Wave: When Minimum Temperature is $\leq 2.0^\circ \text{C}$

(c) For Coastal Stations

When Minimum Temperature departure is $\leq -4.5^\circ \text{C}$ & actual Minimum Temperature is $\leq 15^\circ \text{C}$

Cold Day

When minimum temperature of a station $\leq 10^\circ \text{C}$ for plains and $\leq 0^\circ \text{C}$ for hilly regions

Based on departure

Cold Day: Maximum Temperature Departure from normal -4.5°C to -6.4°C .

Severe Cold Day: Maximum Temperature Departure from normal $\leq -6.5^\circ \text{C}$

Fog

Phenomenon of small droplets suspended in air and the horizontal visibility $< 1 \text{ km}$

Moderate Fog: When the visibility between 500-200 metres

Dense Fog: when the visibility between 50- 200 metres

Very Dense Fog: when the visibility < 50 metres

Thunderstorm

Sudden electrical discharges manifested by a flash of light (Lightning) and a sharp rumbling sound (thunder)

Dust/Sand Storm

An ensemble of particles of dust or sand energetically lifted to great heights by a strong and turbulent wind.

Frost

Ice deposits on ground

Air temperature $\leq 4^\circ \text{C}$ (over Plains)

Squall

A strong wind that rises suddenly, lasts for atleast 1 minute.

Moderate: Wind speed 52-61 kmph

Severe: Wind speed 62-87 kmph

Very Severe: Wind speed > 87 kmph

Sea State

Effect of various waves in the sea over specific area

Rough to very rough: Wind speed 41-62 kmph (22-33 knots) & Wave height 2.5-6 metre

High to very high: Wind speed 63-117 kmph (34-63 knots) & Wave height 6-14 metre

Phenomenal: Wind speed > 117 kmph (> 63 knots) & Wave height > 14 metre

Cyclone

Cyclonic Storm: Wind speed 62-87 kmph (34-47 knots)

Severe Cyclonic Storm: Wind speed 88-117 kmph (48-63 knots)

Very Severe Cyclonic Storm: Wind speed 118-165 kmph (64 - 89 knots)

Extremely Severe Cyclonic Storm: Wind speed 166-220 kmph (90 -119 knots)

Super Cyclone Storm: Wind speed > 220 kmph (> 119 knots)

* Red colour warning does not mean "Red Alert", Red colour warning means "Take Action".
Forecast and Warning for any day is valid from 0830 hours IST of day till 0830 hours IST of next day.
For more details, kindly visit <https://mausam.imd.gov.in> or contact: 011-2434-4599
(Service to the Nation since 1875)

Hot and Humid: When maximum temperatures remain 3°C above normal along with the above normal relative humidity.